



Precinct Laneway



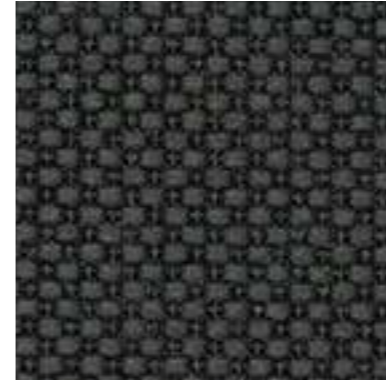
Precinct Sector



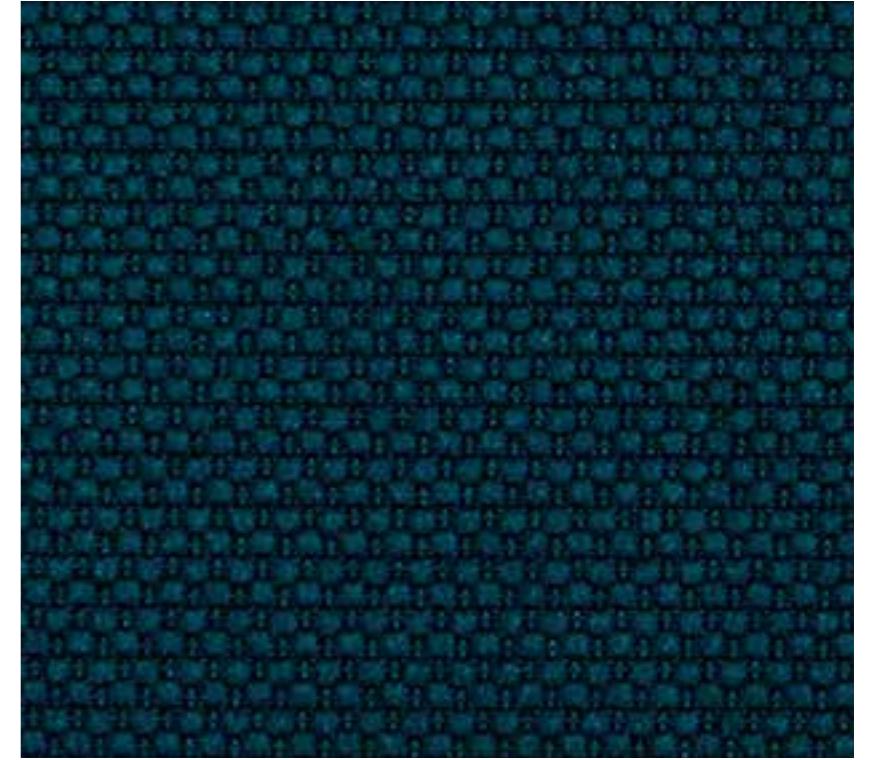
Precinct Greenwall



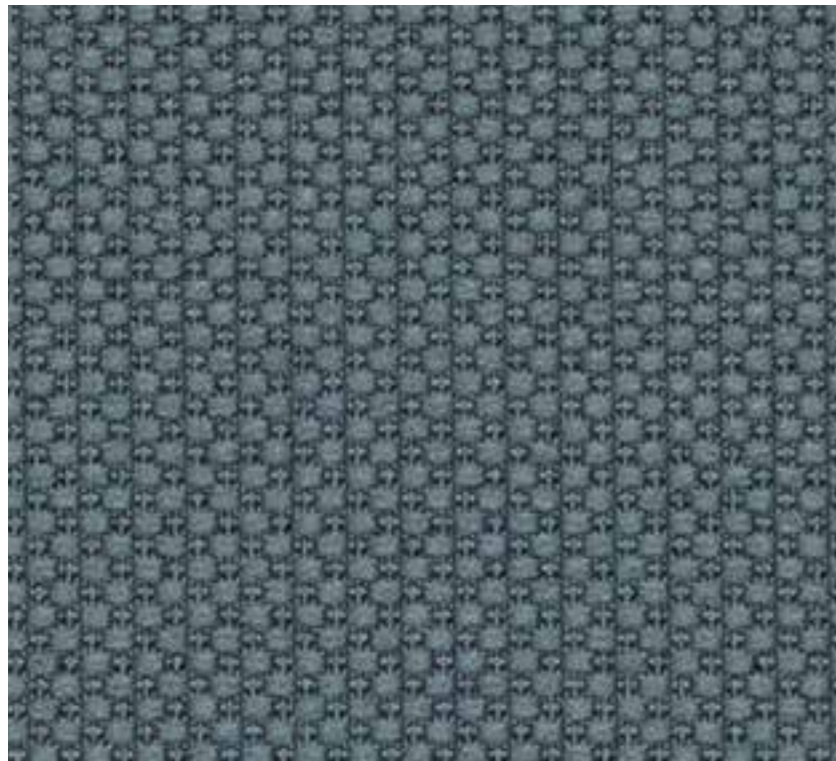
Precinct Solar



Precinct Dock



Precinct Quay



Precinct Urban



Precinct Zone



Precinct Traffic



Precinct Tower

Precinct

Width	140cm
Composition	78% Recycled Polyester, 22% Polyester
Roll size	50m approx.
Weight	357gms lineal metre
Use	Heavy Duty Commercial Upholstery / Screen
Abrasion	100,000 Martindale
Flammability	AS1530.3, ISO5660, AS3837
Light Fastness	6

Colour Variations: All textiles are subject to some colour variation. Fabric supplied to customer order will be within commercial tolerance.

CTA Performance Rating: Tests conducted by independent testing laboratories indicate that PRECINCT met or exceeded the performance guidelines for Screen Fabric Use and Heavy Duty Commercial Use as determined by the CTA (Commercial Textile Association of Australia and NZ).

Fabric Care: Precinct has an Easy Clean finish. Do not remove any part for separate cleaning. Protect from direct sunlight. Vacuum regularly using low suction. Rotate reversible cushions regularly. Professionally dryclean or wipe clean with a damp cloth.

AUSTRALIA
 telephone: 1800 173 209
 facsimilie: 1800 723264
 web: atworkwithcamira.com
 email: sales@atworkwithcamira.com
**at work is a brand of Textilia*

NEW ZEALAND
 telephone: +64 9 368 5768
 facsimilie: +64 9 368 5769
 web: textilia.co.nz
 email: sales@textilia.co.nz



Commercial Textile Association
 of Australia & New Zealand Limited.



Commercial Textile Association
 Performance Rating.



Commercial Textile Association
 Performance Rating.